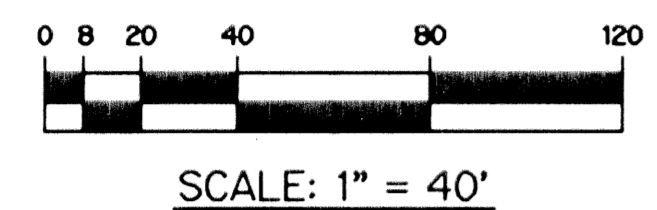
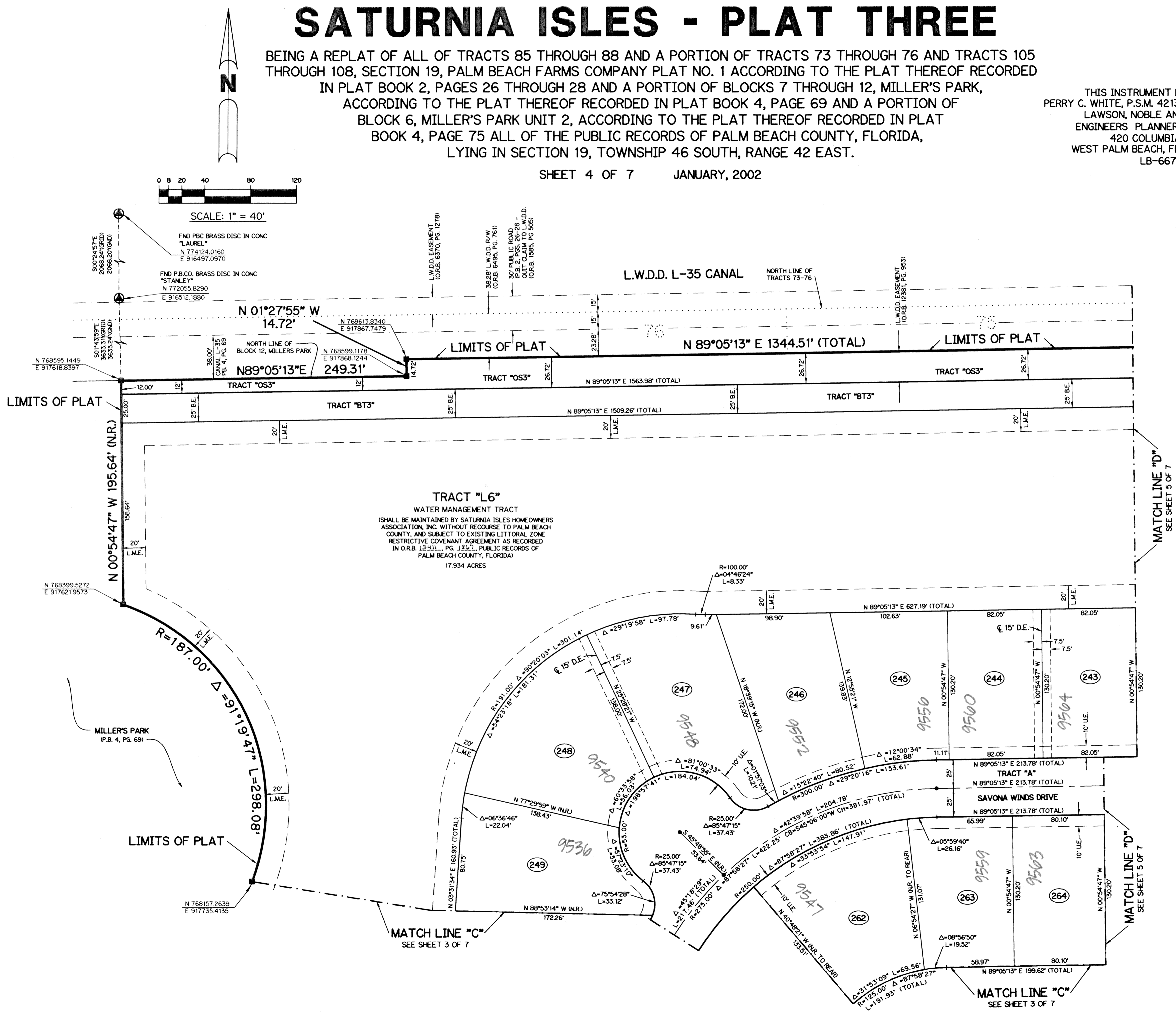


SATURNIA ISLES - PLAT THREE

BEING A REPLAT OF ALL OF TRACTS 85 THROUGH 88 AND A PORTION OF TRACTS 73 THROUGH 76 AND TRACTS 105 THROUGH 108, SECTION 19, PALM BEACH FARMS COMPANY PLAT NO. 1 ACCORDING TO THE PLAT THEREOF RECORDED IN PLAT BOOK 2, PAGES 26 THROUGH 28 AND A PORTION OF BLOCKS 7 THROUGH 12, MILLER'S PARK, ACCORDING TO THE PLAT THEREOF RECORDED IN PLAT BOOK 4, PAGE 69 AND A PORTION OF BLOCK 6, MILLER'S PARK UNIT 2, ACCORDING TO THE PLAT THEREOF RECORDED IN PLAT BOOK 4, PAGE 75 ALL OF THE PUBLIC RECORDS OF PALM BEACH COUNTY, FLORIDA, LYING IN SECTION 19, TOWNSHIP 46 SOUTH, RANGE 42 EAST.

THIS INSTRUMENT PREPARED BY
 PERRY C. WHITE, P.S.M. 4213, STATE OF FLORIDA
 LAWSON, NOBLE AND WEBB, INC.
 ENGINEERS PLANNERS SURVEYORS
 420 COLUMBIA DRIVE
 WEST PALM BEACH, FLORIDA 33409
 LB-6674

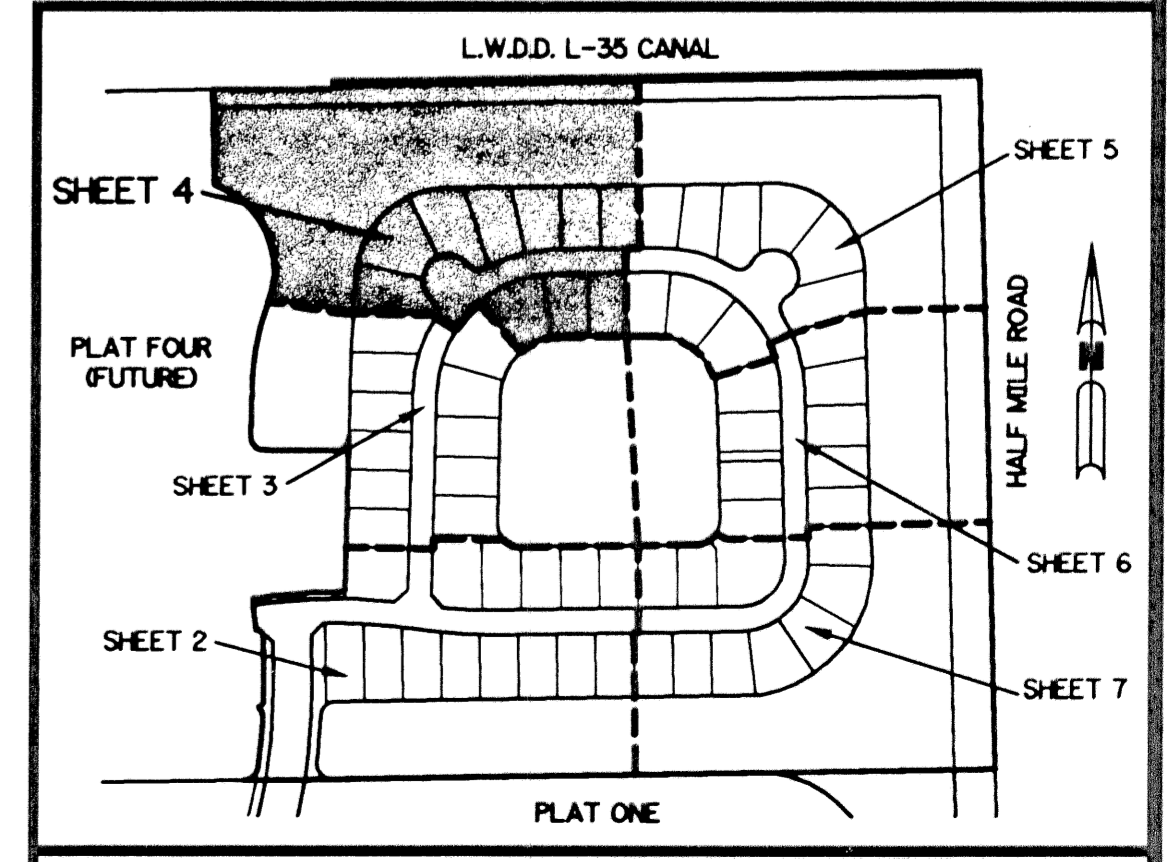
SHEET 4 OF 7 JANUARY, 2002



- LEGEND:**
- - SET PERMANENT REFERENCE MONUMENT, L.B. #6674
 - - FOUND PERMANENT REFERENCE MONUMENT, L.B. #6674
 - - SET PERMANENT CONTROL POINT, L.B. #6674
 - - FOUND PERMANENT CONTROL POINT, L.B. #6674
 - Δ - DELTA ANGLE
 - BE. - BUFFER EASEMENT
 - CB - CHORD BEARING
 - CH - CHORD DISTANCE
 - CL - CENTERLINE
 - DE. - DEED BOOK
 - DE. - DRAINAGE EASEMENT
 - L. - ARC LENGTH
 - L.A.E. - LIMITED ACCESS EASEMENT
 - L.M.A.E. - LAKE MAINTENANCE ACCESS EASEMENT
 - L.M.E. - LAKE MAINTENANCE EASEMENT
 - L.W.D.D. - LAKE WORTH DRAINAGE DISTRICT
 - N.R. - NOT RADIAL
 - N.T.S. - NOT TO SCALE
 - O.R.B. - OFFICIAL RECORD BOOK
 - P.B. - PLAT BOOK
 - PGS. - PAGES
 - P.S.M. - PROFESSIONAL SURVEYOR AND MAPPER
 - R. - RADIUS
 - RAD. - RADIAL
 - R/W - RIGHT-OF-WAY
 - S.T. - SURVEY TIE
 - U.E. - UTILITY EASEMENT
 - P.B.F.C. - PALM BEACH FARMS COMPANY PLAT NO. 1 (P.B. 2, PGS. 26 - 28)
 - DENOTES TRACT NUMBER PER PALM BEACH FARMS COMPANY PLAT NO. 1 (P.B. 2, PGS. 26 - 28)
 - N 737648.0171 E 905258.2326 - DENOTES STATE PLANE COORDINATES

NOTE:
 COORDINATES SHOWN ARE GRID COORDINATES
 DATUM = NAD 83 (1990 ADJUSTMENT)
 ZONE = FLORIDA EAST ZONE
 LINEAR UNIT = U.S. SURVEY FEET
 COORDINATE SYSTEM = 1983 STATE PLANE TRANSVERSE MERCATOR PROJECTION
 ALL DISTANCES ARE GROUND
 SCALE FACTOR = 1.0000193
 PLAT BEARING = GRID BEARING
 NO ROTATION

KEY MAP N.T.S.



SUBDIVISION SATURNIA ISLES - PL 3
 BOOK 07
 PLAT NO. 3
 DATE 01-15-02
 SHEET 4 OF 7
 SURVEYOR PERRY C. WHITE
 ENGINEERS PLANNERS SURVEYORS
 420 COLUMBIA DRIVE
 WEST PALM BEACH, FLORIDA 33409
 LB-6674